

轴承 Bearing	系列、尺寸范围 Series and bore diameter range	滑动摩擦副 Sliding contact surfaces	使用温度范围 Permissible operating temperature range	产品特点 Design characteristics	页码 Page
球头杆端关节轴承 Ball joint rod ends					
	SQ...-RS 5~22	钢/锌基合金 Steel/Zinc base alloy	-50℃~+150℃	弯杆型球头杆端关节轴承球头座由特殊的锌基合金铸成，球头杆的材料是碳钢。 Ball joint housing is made up of zinc base alloy, ball joint shank of carbon steel.	109
	SQY...-RS 4.83~19.05			产品特点与 SQ...-RS 系列相同，但为英制螺纹。 As series SQ...-RS, but with inch screw thread.	
	SQZ...-RS 5~22			直杆型球头杆端关节轴承球头座由特殊的锌基合金铸成，球头杆的材料是碳钢。 Ball joint housing is made up of zinc base alloy, ball joint shank of carbon steel.	110
	SQD... 5~16			单杆型球头杆端关节轴承外圈由特殊的锌基合金铸成，球头杆的材料是碳钢。 Ball joint outer ring is made up of zinc base alloy, ball joint shank of carbon steel.	
	SQG... 5~14			钢/钢 Steel/Steel	弯杆型球头杆端关节轴承球头座和球头杆的材料均为碳钢。 Ball joint housing and shank are of carbon steel and zinc coated.

We, Fujian Longxi Bearing (Group) Corporation Limited, hereby certify that our LS bearings do not contain the hazardous substances restricted by ROHS Directive.

球头杆端关节轴承由带有内球面的球头座和带有外球面的球头杆构成一对滑动摩擦副，通常球头座螺纹有左右旋之分。
LS 球头杆端关节轴承滑动摩擦副有两种：钢对钢和钢对锌基合金。球头座由特殊的锌基合金铸成或碳钢加工而成，球头杆由钢球和杆精密焊接而成，具有自调心、耐磨、安装简便的特点。

Ball joint rod ends have a ball joint housing with a sphered convex inside surface and a ball joint shank with a correspondingly sphered but concave outside surface. Ball joint housing is with left or right-hand thread. There are two kinds of sliding contact surfaces: steel to steel and steel to zinc base alloy. Ball joint housing is made of zinc base alloy or carbon steel, ball joint shank is made of a steel ball and a stud which is joined by precision welding, it has characteristics of self-aligning, wear-resistance and easy mounting.

球头杆端关节轴承公差

Tolerances for ball joint rod ends

球头杆或座 Shank or housing of ball joint

d mm		Δd_{mp} um		Δh_{is} um	
超过 over	到 incl.	max	min	max	min
—	6	0	-30	+800	-1200
6	10	0	-36	+800	-1200
10	18	0	-43	+800	-1200
18	30	0	-52	+800	-1200

球头座圈 Rings of ball joint housing

D mm		ΔD_{mp} um		ΔC_s um	
超过 over	到 incl.	max	min	max	min
10	18	0	-27	+100	-100
18	30	0	-33	+100	-100
30	50	0	-39	+100	-100

尺寸和公差符号说明详见 P25 Details of dimension and tolerance symbols see page 25

球头杆端关节轴承径向游隙

Radial internal clearance of ball joint rod ends

类型 Type	基本组 Group normal um	
	min	max
SQD...	20	80
SQZ...-RS	0	30
SQ...-RS、SQY...-RS	20	60
SQG...	0	80

球头杆端关节轴承配合

Fits of ball joint rod ends

螺纹 Thread

外螺纹 Male thread	内螺纹 Female thread
6g	6H

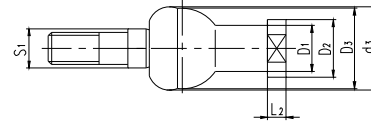
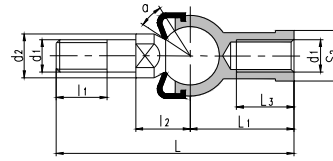


球头杆端关节轴承 Ball Joint Rod ends



滑动摩擦副: 钢 / 锌基合金

Sliding contact surfaces: Steel / Zinc base alloy



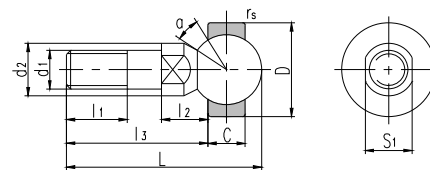
轴承型号 Bearing number	外形尺寸 Dimensions mm															额定静载荷 Static load ratings kN	重量 Weight ≈kg
	d ₁	d ₂	d ₃	l ₁	l ₂	S ₁	L	L ₁	L ₂	L ₃	D ₁	D ₂	D ₃	S ₂	α° ≈		
SQZ5-RS	M5	9	19	8	11	7	46	24	4	12	9	11	17	9	15	2.8	0.025
SQZ6-RS	M6	10	20	11	12.2	8	55.2	28	5	15	10	13	20	11	15	3.7	0.041
SQZ8-RS	M8	12	24	12	16	10	65	32	5	16	12.5	16	24	14	15	5.8	0.075
SQZ10-RS	M10×1.25	14	30	15	19.5	11	74.5	35	6.5	18	15	19	28	17	15	8.4	0.12
SQZ12-RS	M12×1.25	17	32	17	21	15	84	40	6.5	20	17.5	22	32	19	15	11	0.18
SQZ14-RS	M14×1.5	19	38	22	23.5	17	103	45	8	25	20	25	36	22	11	15	0.27
SQZ16-RS	M16×1.5	22	44	23	25.5	19	112	50	8	27	22	27	40	22	11	15	0.36
SQZ18-RS	M18×1.5	23	45	25	31	20	130.5	58	10	32	25	31	45	27	11	19	0.54
SQZ20-RS	M20×1.5	27	50	25	29	24	133	63	10	38	27.5	34	45	30	7.5	19	0.57
SQZ22-RS	M22×1.5	27	52	26	33	24	145	70	12	43	30	37	50	32	7.5	23	0.76

球头座杆螺纹也可为左旋, 若是左旋, 轴承型号和螺纹标记需加“L”和“左”, 例如: SQZL5-RS M5 左-6H。
The shank of ball joint housing may be left-hand thread, for left-hand thread, suffix “L” is added to bearing number and thread sign, e.g. SQZL5-RS M5L-6H.



滑动摩擦副: 钢 / 锌基合金

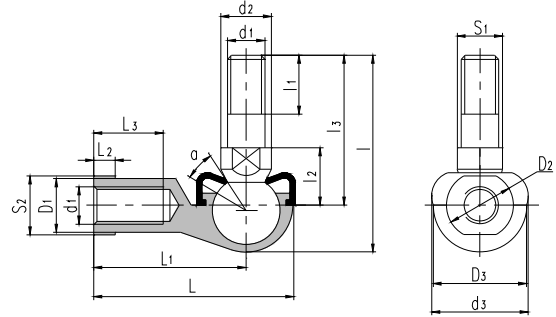
Sliding contact surfaces: Steel / Zinc base alloy



轴承型号 Bearing number	外形尺寸 Dimensions mm											额定静载荷 Static load ratings kN	重量 Weight ≈kg
	d ₁	d ₂	l ₁	l ₂	l ₃	L	S ₁	C	D	r _s min	α° ≈		
SQD5	M5	9	8	8	19	27.5	7	6	16	0.3	25	2	0.014
SQD6	M6	10	11	8.8	23.8	33.5	8	6.75	18	0.3	25	3.2	0.021
SQD8	M8	12	12	11.6	28.6	41	10	9	22	0.3	25	5.7	0.042
SQD10	M10×1.25	14	15	14.2	34.2	49	11	10.5	26	0.3	25	9.2	0.067
SQD12	M12×1.25	17	17	15.1	38.1	55.1	15	12	30	0.5	25	14	0.108
SQD14	M14×1.5	19	22	16.8	51.3	70.7	17	13.5	34	0.5	20	19	0.167
SQD16	M16×1.5	22	23	18	54.5	76.3	19	15	38	0.5	20	26	0.238



球头杆端关节轴承 Ball Joint Rod ends



滑动摩擦副：钢 / 锌基合金

Sliding contact surfaces: Steel / Zinc base alloy

轴承型号 Bearing number	外形尺寸 Dimensions mm																	额定静载荷 Static load ratings kN	重量 Weight ≈kg
	d ₁	d ₂	d ₃	l	l ₁	l ₂	l ₃	S ₁	L	L ₁	L ₂	L ₃	D ₁	D ₂	D ₃	S ₂	α° ≈		
SQ5-RS	M5	9	19	29	8	10	21	7	35	27	4	14	9	11	16	9	25	2.2	0.026
SQ6-RS	M6	10	20	35.5	11	11	26	8	40	30.5	5	14	10	13	19	11	25	3.5	0.039
SQ8-RS	M8	12	24	42.5	12	14	31	10	48	36.5	5	17	12.5	16	23	14	25	6.6	0.068
SQ10-RS	M10×1.25	14	30	50.5	15	17	37	11	57	43.5	6.5	21	15	19	27	17	25	10	0.112
SQ12-RS	M12×1.25	17	32	57.5	17	19	42	15	66	50.5	6.5	25	17.5	22	31	19	25	16	0.164
SQ14-RS	M14×1.5	19	38	73.5	22	21.5	56	17	75	57.5	8	26	20	25	35	22	25	19	0.254
SQ16-RS	M16×1.5	22	44	79.5	23	23.5	60	19	84	64.5	8	32	22	27	39	22	20	26	0.336
SQ18-RS	M18×1.5	23	45	90	25	26.5	68	20	93	71	10	34	25	31	44	27	20	33	0.464
SQ20-RS	M20×1.5	27	50	90	25	27	68	24	99	77	10	35	27.5	34	44	30	20	45	0.538
SQ22-RS	M22×1.5	27	52	95	26	28	70	24	109	84	12	41	30	37	50	32	16	48	0.713

球头座杆螺纹也可左旋，若是左旋，轴承型号和螺纹标记需加“L”和“左”，例如：SQL5-RS M5左-6H。

The shank of ball joint housing may be left-hand thread, for left-hand thread, suffix “L” is added to bearing number and thread sign, e.g. SQL5-RS M5L-6H.

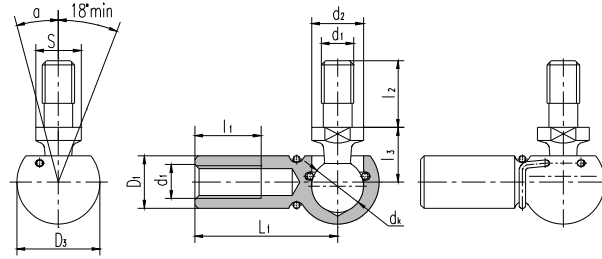
轴承型号 Bearing number	外形尺寸 Dimensions mm																	额定静载荷 Static load ratings kN	重量 Weight ≈kg
	d ₁	d ₂	d ₃	l	l ₁	l ₂	l ₃	S ₁	L	L ₁	L ₂	L ₃	D ₁	D ₂	D ₃	S ₂	α° ≈		
SQY4-RS	10-32	9	19	29	8	10	21	7	35	27	4	14	9	11	16	9	25	2.2	0.026
SQY6-RS	1/4-28	10	20	35.5	11	11	26	8	40	30.5	5	14	10	13	19	11	25	3.5	0.039
SQY7-RS	5/16-24	12	24	42.5	12	14	31	10	48	36.5	5	17	12.5	16	23	14	25	6.6	0.068
SQY9-RS	3/8-24	14	30	50.5	15	17	37	11	57	43.5	6.5	21	15	19	27	17	25	10	0.112
SQY11-RS	7/16-20	17	32	57.5	17	19	42	15	66	50.5	6.5	25	17.5	22	31	19	25	16	0.164
SQY12-RS	1/2-20	19	38	73.5	22	21.5	56	17	75	57.5	8	26	20	25	35	22	25	19	0.254
SQY15-RS	5/8-18	22	44	79.5	23	23.5	60	19	84	64.5	8	32	22	27	39	22	20	26	0.336
SQY19-RS	3/4-16	23	45	90	25	26.5	68	20	93	71	10	34	25	31	44	27	20	33	0.464

球头座杆螺纹也可左旋，若是左旋，轴承型号和螺纹标记需加“L”和“LH”，例如：SQYL4-RS 10-32UNF-2BLH。

The shank of ball joint housing may be left-hand thread, for left-hand thread, suffix “L” is added to bearing number and thread sign, e.g. SQYL4-RS 10-32UNF-2BLH.



球头杆端关节轴承 Ball Joint Rod ends



滑动摩擦副：钢 / 钢

Sliding contact surfaces: Steel / Steel

轴承 型号 Bearing number	外形尺寸 Dimensions mm											额定静载荷 Static load ratings kN	重量 Weight ≈kg
	d ₁	d ₂	d _k	l ₁	l ₂	l ₃	S	L ₁	D ₁	D ₃	α° ≈		
SQG5	M5	8	8	10.2	10.2	9	7	22	8	12.8	10	2.2	0.015
SQG6	M6	10	10	11.5	12.5	11	8	25	10	14.8	15	3.5	0.025
SQG8	M8	14	13	14	16.5	13	11	30	13	19.3	15	6.6	0.053
SQG10	M10	16	16	15.5	20	16	13	35	16	24	15	10	0.104
SQG12	M12	16	16	15.5	20	16	13	35	16	24	15	16	0.104
SQG14	M14×1.5	19	19	21.5	28	20	16	45	22	30	15	19	0.221
SQG14/B5	M14×2	19	19	21.5	28	20	16	45	22	30	15	26	0.221

球头座杆螺纹也可为左旋，若是左旋，轴承型号和螺纹标记需加“L”和“左”，例如：SQGL5 M5左-6H。
The shank of ball joint housing may be left-hand thread, for left-hand thread, suffix “L” is added to bearing number and thread sign, e.g. SQGL5 M5L-6H.